

The email from Wendy

From: wendy <[REDACTED]>
Date: May 30, 2023 at 3:47:32 AM
Subject: Inconsiderate, Unreasonable, UNACCEPTABLE!

Hello Ben-

“This is the second night (in the last 4) we have been greatly disturbed by the noise and dust from large trucks continuously going up and down the hill on the road in front of [our house] hauling who knows what to your farm in the middle of the night.

What is going on?

We cannot even leave our windows open.

THIS IS NOT TOLERABLE!”

*"Please cease these night time deliveries.
They are definitely affecting our quality of life in a
negative way."*

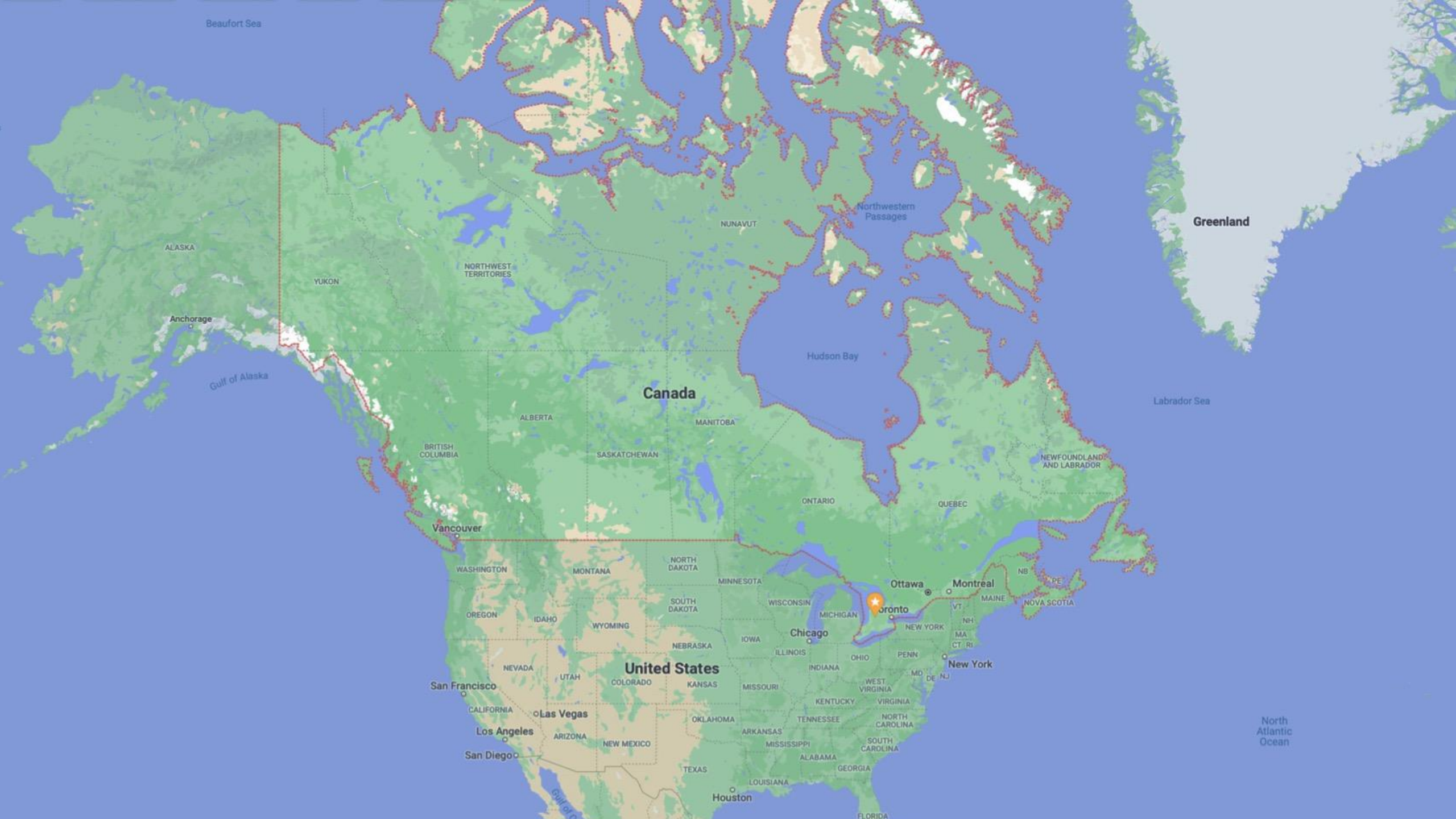


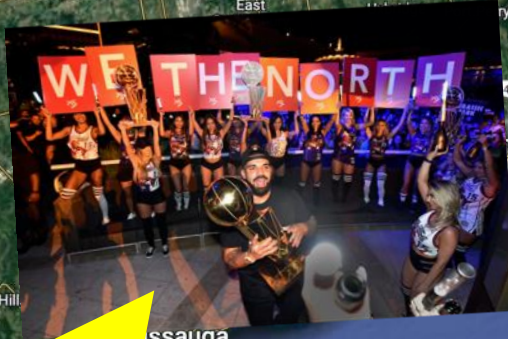
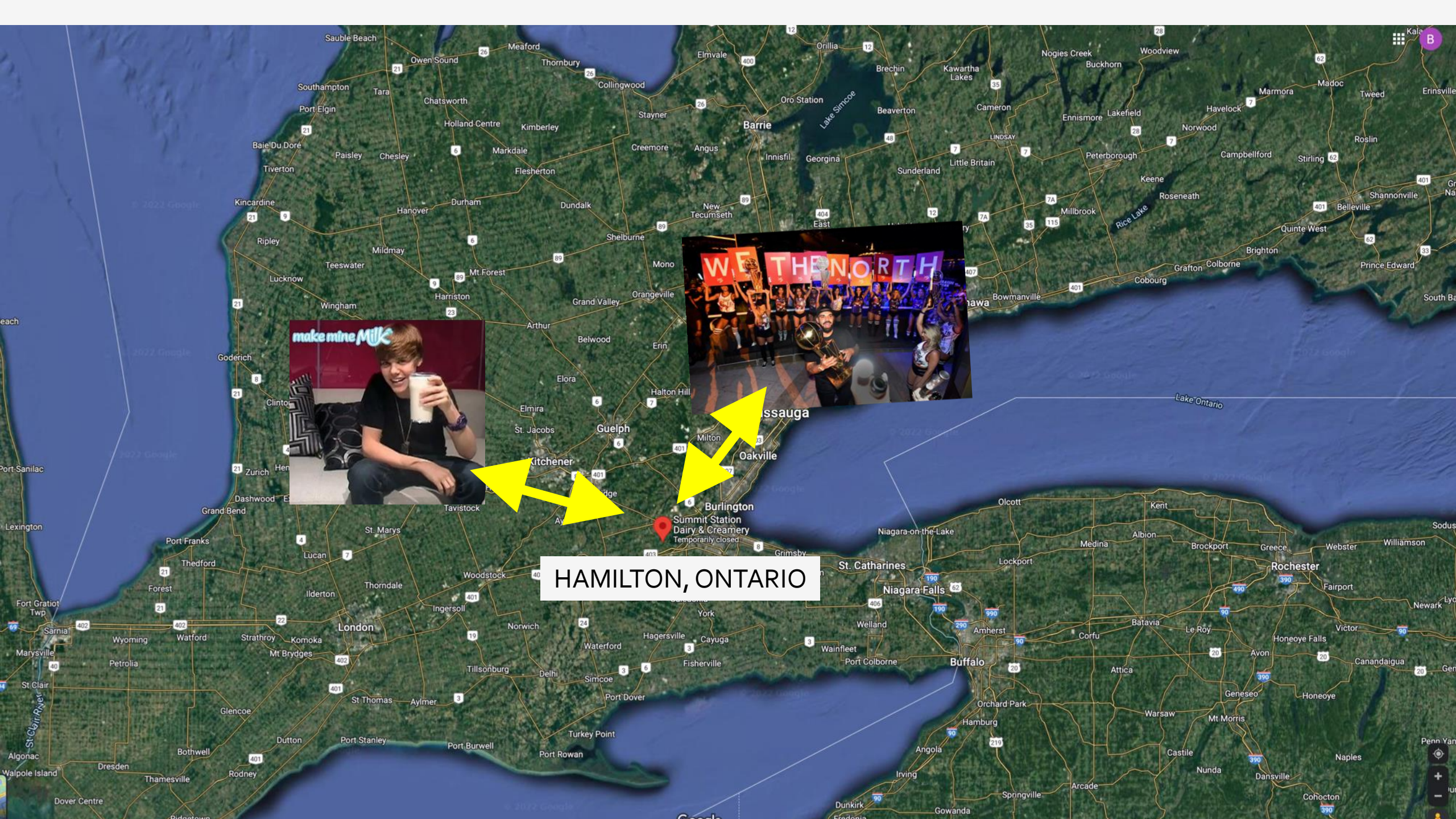
HOW TO EARN AND KEEP A SOCIAL LICENSE WITH YOUR COMMUNITY

BEN LOEWITH

Australian Dairy Conference

February, 2024





HAMILTON, ONTARIO







JOE LOEWITH & SONS – BY THE NUMBERS

450

MILKING COWS

44

AVERAGE KG / COW / DAY

4.6%

FAT

3.3%

PROTEIN

115000

SOMATIC CELL COUNT

25%

PREGNANCY RATE

6

FULL TIME EMPLOYEES

25

PART TIME EMPLOYEES

DOUBLE 16 PARALLEL PARLOUR

NO SORT GATES

MINIMAL CASH CROPPING

ALL FIELD WORK DONE BY CUSTOM OPERATORS

JOE LOEWITH AND SONS LTD.

Mission Statement

1
We will profitably produce a wholesome and nutritious product
that the marketplace demands.

2
We will meet the needs of every cow, every day.
Animal welfare will be of paramount importance.

3
We will encourage and foster the growth and development
of all individuals involved.

4
We will endeavour to protect and improve the environment,
leaving it better for future generations.

5
We will be positive contributors to the community.



NEIGHBOURS

*What do
rural
neighbours
expect?*

- **Flowing fields of sunflowers**
 - **Birds chirping, bees buzzing**
 - **No signs of human activity**
- 



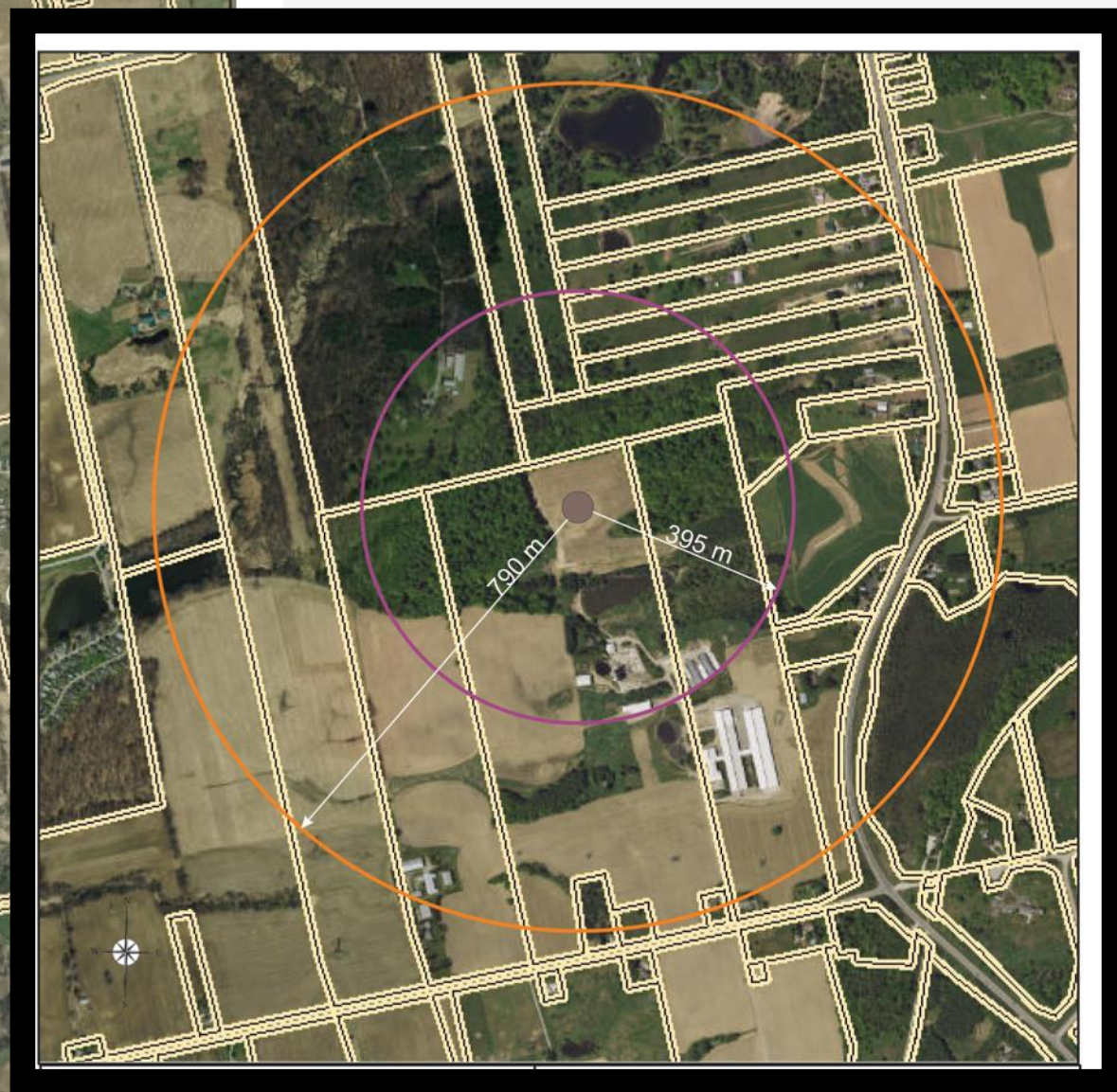
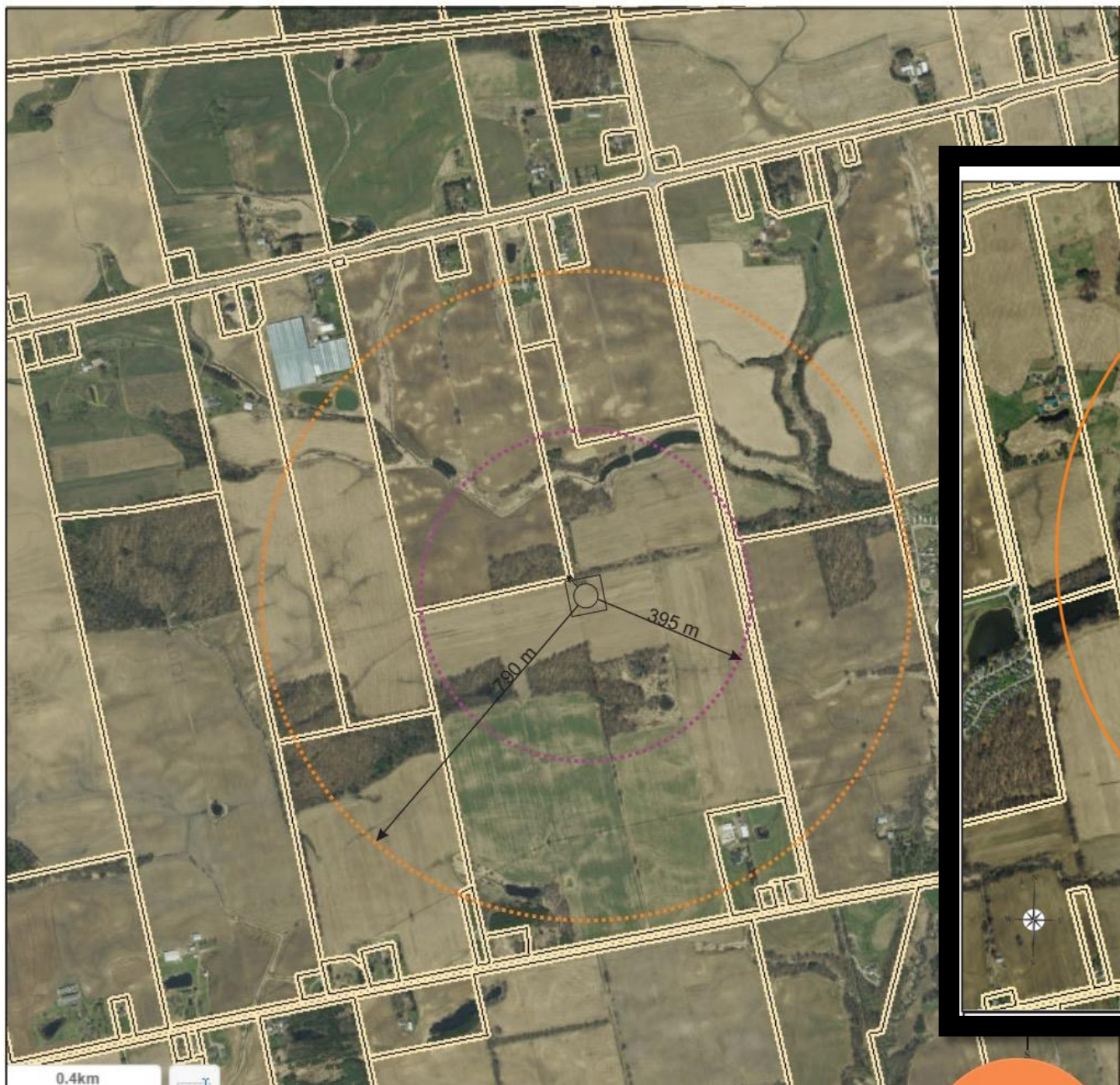


Top 3 Complaints

- Odour
 - Noise
 - Chemical Use
-

*The tale of a Farmer,
Two Doctors,
&
a 15 million Litre
Manure Pit*







Tuesday, Mar 22 • 4:32 p.m.

Hi Ben

Any updates on the road and asphalt adjacent to our place.? Thanks Brian and Heather

Just waiting for the frost to come out of the ground.



Tuesday, Jun 21 • 12:13 p.m.



Text mess...



Thursday, Jun 10, 2021 • 6:03 p.m.

Hi Ben

Hope you are well
Might try and drop by to discuss any additional thoughts on the road and dust
Really appreciate the efforts to help with this

Just wondering what's happening at the farm road? Are you fixing up the whole road with gravel? It's made a big improvement

H

We got a line on some shredded



Text mess...



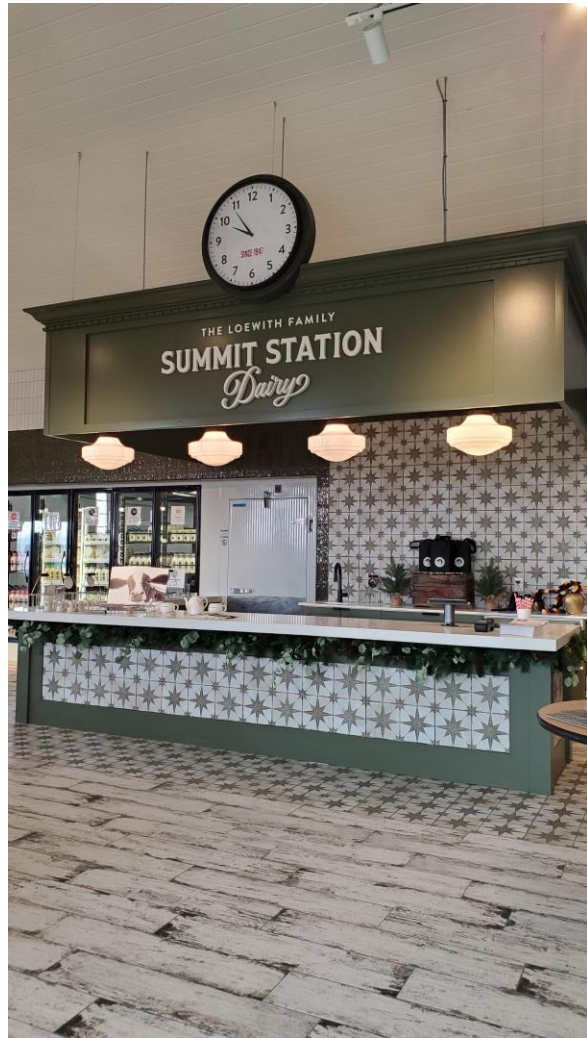






SUMMIT STATION *Dairy*







SUMMIT STATION
Dairy

SUMMIT STATION
Dairy




COMMUNITY

*What do
farmers like
to talk about?*

- High levels of production
- Cool genetic stuff
- Cool technology stuff

*What does the
community
care about?*

- The cows are well treated
 - Their food/milk is safe
 - Efforts are being made to protect the land and water
- 

Tell the story they want to hear.



*Show people that your values
are the same as their values.*









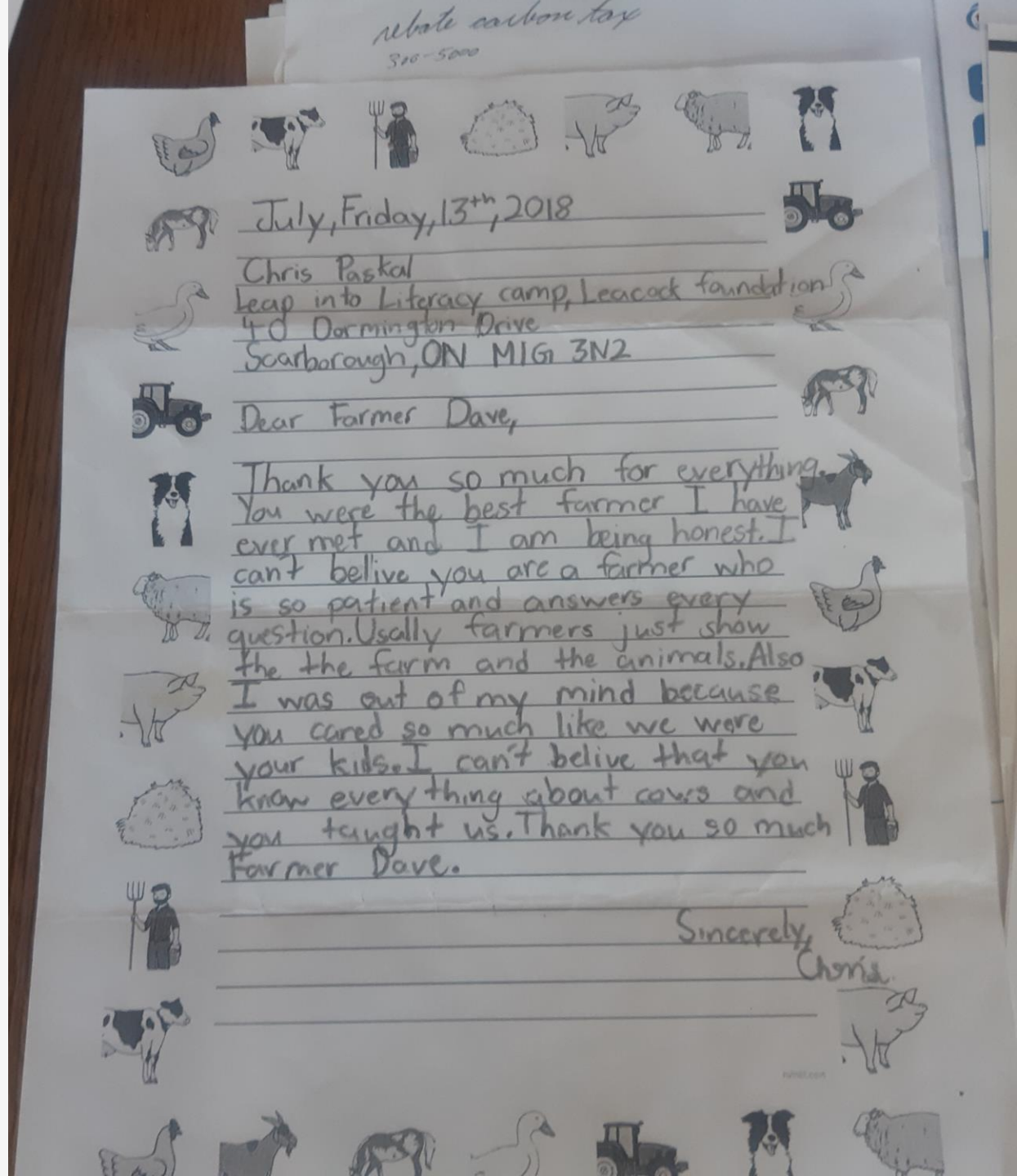




Be open.







Top 3 Concerns During Tours

- Do the cows go outside?
 - Do the babies get to stay with their mother?
 - Does milking hurt?
-

Actually be part of the community.











Our Macdonald
and his farm. Over 80% of
Canadian Farms are family owned
and operated. Larger operations
supply farms produce enough food
for Canadians and others across
the world.





Summit Station



My response to Wendy

B

→ Ben Loewith <benloewith@gmail.com>
to wendy, bcc: Jen, bcc: carl, bcc: David, bcc: Naomi, bcc: Lenny, bcc: (Loewith), bcc: Robbie, bcc: Leah ▼

Good morning Wendy and Ed;

Let me start by saying that I am genuinely sorry that the activities of the farm are affecting your quality of life. I can empathize with you that dump trucks

I know it doesn't really help or change the situation for you, but I'll explain why the vehicles were running at such a late hour.

The dump trucks were delivering ground asphalt from the resurfacing of the Linc that took place last weekend. We were fortunate enough to be offered a facility, which will reduce the amount of dust that will be kicked up compared to using gravel. As the resurfacing of the Linc was taking place late Friday

The manure trucks that were going by your home last night were headed to the fields in Copetown and Mineral Springs Rd. The drivers choose to go to extremely dangerous, as I'm sure you can imagine. We try to follow the best agronomy practices, and replacing the nutrients in the soil is a necessity.

I am sure that knowing the reasons we are running so late does very little to change the situation for you, but at least I wanted you to know that it wasn't completely dangerous. We have paved a driveway down the road to reduce dust, asked the drivers to slow down when going by houses, and we email or text a few

By way of letting you know the upcoming construction schedule, the bottling facility is almost complete, and we will begin moving all that topsoil and creating

within the next month or so. After that, I hope the field will no longer look like a construction site.

If you would like me to reach out to you to let you know when we may be having late night activities on the road, I am happy to do that. Conversely, if you have events at your house like an outdoor party etc), just send me an email and I'll see what we can do to juggle our schedule.

While the equipment traffic and sometimes late nights are an unfortunate reality of our industry, if there are any other suggestions or compromises that you

Ben Loewith

My response to Wendy

"...I am genuinely sorry that the activities of the farm are affecting your quality of life..."

"I know it doesn't really help or change the situation for you, but I'll explain why..."

"If you would like to reach out to me..."

Thank You



benloewith@gmail.com

SummitStationDairy.com